



# Aliva<sup>®</sup>-530 Shotcrete system

## IDEAL MACHINE FOR TUNNELING

### ■ Designed for demanding infrastructure projects

Aliva, one of the first companies to manufacture shotcrete equipment, introduces a new generation of shotcrete systems, specially designed for road and railway tunnels, as well as for all tunnels with larger diameters.

### ■ Continuing the well proven 500 series

With this machine Aliva follows a long tradition, offering a successor to the well known 500 series. Aliva perfectly combines its knowledge about shotcrete application and shotcrete machinery.

### ■ The combination of machine and material

All components like the 30 m<sup>3</sup>/h concrete pump, the spraying arm with 17 m vertical reach and the 12 m<sup>3</sup>/min compressor are designed for the toughest environments and are perfectly synchronized for highest quality requirements in shotcrete application.

aliva<sup>®</sup>

BUILDING TRUST

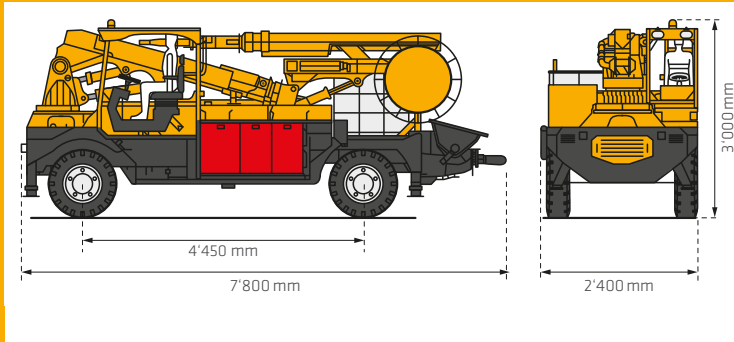


# Aliva<sup>®</sup>-530 Shotcrete system

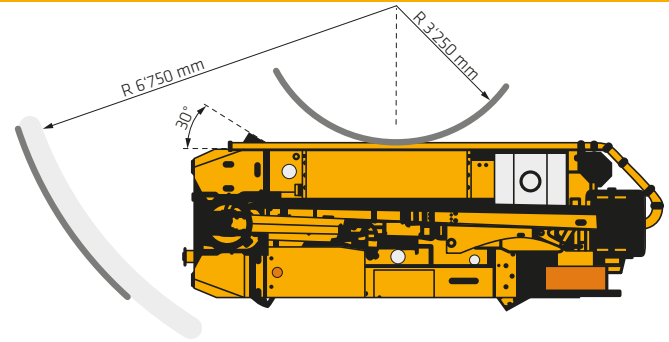
## THE IDEAL MACHINE FOR TUNNELING

The New Aliva-530 with a modern design and attractive look, is based on the well proven chassis of the 500 series from Aliva. Tier 3 and Stage 5 diesel engines are available. The spraying arm can be unfolded in tunnels with a cross section of 7.7 m x 4 m. A maximum spraying height of 17 m covers up to the largest tunnel sections. With 30 m<sup>3</sup>/h concrete output, 12m<sup>3</sup>/min air volume and the synchronized peristaltic dosing pump, the Aliva-530 offers highest performance and quality in the roughest environments. The machine is equipped with the latest generation of IFM controllers furnished with a big 7" display allowing to see clearly all important parameters at one sight.

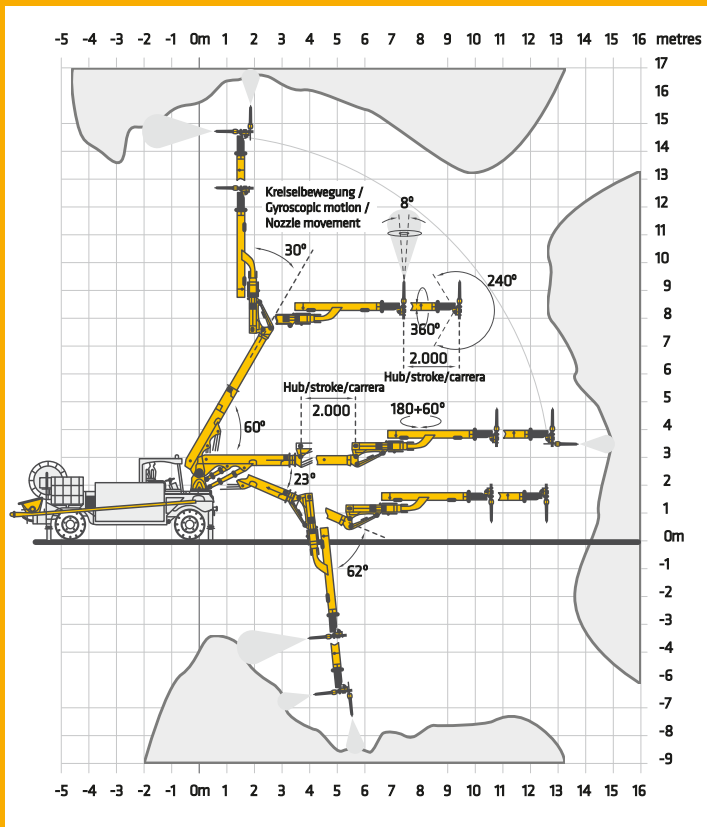
### DIMENSIONS



### TURNING RADIUS



### SPRAYING AREA



### TECHNICAL SPECIFICATIONS

Shotcrete Equipment	
Total weight (empty)	16'000 kg
Compressor	75 kW - 12m <sup>3</sup> /min at 7,5 bar
Concrete pump	up to 30 m <sup>3</sup> (Theoretical output)
Grain size	Max. 16 mm
Hopper height	1'400 mm
Spraying arm	Max. height 17 m (with 1.5 m spraying distance)
Nozzle Converto RoboSpray	DN80 with outlet 45 mm, with anti-kink coil
Liquid dosing unit	Squeeze rotor-hose pump for liquid additives
Electrical	0.75 kW - 400 V - 50/60 Hz - IP55
Output	30 - 700 l/h (max 10 bar)
Cable drum	Hydraulic cable reel, manually proportional operated
Cable length / type	50 m or 100 m - 3x95 mm <sup>2</sup> + 3G16 mm <sup>2</sup> (3.76 kg/m)
Electrical connection box	400 V 50/60 Hz - IP55
Max. connection load	270 A with stand still slip ring (4h cycle)
Hydraulic power pack	Electrical 55 kW - 400 V - 50/60 Hz - IP 55
Electric control box	400 V - 50/60 Hz - IP65 with 7" Display
Remote control	Radio remote control (2.4 GHz), 25 m cable included
Accelerator tank	1'000 liter IBC accelerator tank for liquid additives
High pressure Water pump	6 kW 200 bar 15 l/min 15 m hose (optional)
Carrier diesel	
Motor John Deere Stage V	106 kW with 563 Nm @ 1'800 rpm
Motor Deutz Tier 3	70 kW with 304 Nm @ 2'200 rpm
Dieseltank	130 liter
Transmission	Hydrostatic
Steering	Four-wheel hydraulic steering (4WS), crab mode
Braking system	Service-free wet disc and SAHR break (P)
Tyres	Multipurpose 18-19.5 16PR MPT-02 TL
Cabin	ROPS-FOPS, 180° swivelling seat
Speed	Max. 20 km/h
Stabilizer	4 x Hydraulic
Lights	LED



**SIKA SCHWEIZ AG**  
Aliva Equipment  
Tüffenwies 16  
CH-8048 Zürich  
Switzerland

**Contact**  
Phone +41 58 436 32 22  
Fax +41 58 436 41 40  
www.aliva-equipment.com  
aliva.equipment@ch.sika.com



**BUILDING TRUST**



Prior to use or processing, always consult the current instruction manual of the products used. The current version of our respective General Terms and Conditions applies.